

CONNECT



Lake Cathie
Public School

A 1240 Ocean Drive, Lake Cathie NSW 2445
T (02) 6584 8060 **F** (02) 6584 8070

E lakecathie-p.school@det.nsw.edu.au
W lakecathie-p.schools.nsw.gov.au

Calendar Term 3 Week 10 - Term 4 Week 1

Mon 21 September 2020
Tue 22 September 2020
Uniform shop. Order online on school website
Wed 23 September 2020
Student Banking
Thu 24 September 2020
Years 3 - 6 Term 1 sport catch up - Double session. Canteen Order online at My School Connect Uniform shop. Order online on school website
Fri 25 September 2020
Canteen Order online at My School Connect Last day of term for students
Mon 12 October 2020
Students return for Term 4 Canteen Order online at My School Connect
Tue 13 October 2020
Uniform Shop. Order online through school website
Wed 14 October 2020
Student Banking
Thu 15 October 2020
Years 3-6 Sport Dyslexia Awareness Day - Wear RED Canteen Order online at My School Connect Uniform Shop. Order online through school website
Fri 16 October 2020
Canteen Order online at My School Connect



The Tacking Point Lighthouse will be lit up in red on Thursday night 15 October.

GO RED FOR DYSLEXIA

Wear Red for Dyslexia Out of Uniform Day – Thursday 15 October (Term 4 Week 1)

Dyslexia is the most common learning difficulty, which affects a child's ability to learn to read and spell. This October we are hosting a RED day to create awareness for dyslexia and support for our struggling readers in Australia. We are not asking for a gold coin donation, just a day to help raise awareness.

Uniform shop is filling orders on Tuesdays and Thursdays Order forms available on the school website
Canteen is open Thursday & Friday Online orders only
School Office Hours 8.15am - 3.15pm
Student Banking is on Wednesday

Thanks for a great Term 3

Please accept our sincere thanks for the commitment shown by all families in line with our community restrictions. We await the Government and Departments of Health and Education's updates for Term 4 and what that looks like for our students in particular. They are certainly practising our mindsets, with positivity, resilience and being brave part of many discussions this term. I hope our students and staff enjoy the coming break and refresh ready to move into Term 4. Many staff are undertaking professional learning over a number of days during the holidays but hope to enjoy time with their kids too.

Anti Bullying Review

Our staff are currently working through our Anti Bullying plan as part of our annual review. We will share our update with the P&C and families early next term ready for further implementation in 2021.

Facebook Changes

Our change to an official Department of Education co-managed FaceBook Page is taking a little longer than originally planned. When all ready to roll out, we will inform our school community of the changes and how to move across from our FB Group.

Canteen Changes

After working with the P&C and the Director Educational Leadership for our area, the School will take over the running of the canteen saving many hours of hard work for the P&C executive with HR and wage management for the canteen coordinator. Not much will change, however the treasurer role, so impressively managed by Roger Bussell, will mainly support fundraising activities and the wages and HR will be managed by the Department of Education and locally managed by Rachel Caller our Office Manager and myself. A huge thank you to the P&C for running a great canteen for five and a half years and providing thousands of lunches to

students and staff as well as the many catering jobs and carnivals. Huge thanks indeed!

Building Update and the P&C

Claire Briggs, parent representative on the Project Reference Group, Linda Barnett P&C Secretary and Bec Bouldin P&C President joined another school parent, Lisa Warwick from AWEdwards, on a tour of the building site. I think they were really excited for the students at our school now and into the future. The P&C are working on a few initiatives currently, including our annual Jam Jars from The Other Chef, details to come shortly, and a commemorative paver drive for families or community members to buy with their name on them and to be installed along some of our new walkways to celebrate the next stage in the life and success of our beautiful local public school.



Support Class/es Update

As part of our building upgrades, we are being provided facilities to start either one or two support classes for students with a diagnosed disability and high support needs. Currently our closest support classes available are in Port Macquarie, Wauchope and Kendall. We are in discussions with senior Department of Education staff to plan for the provision of this supported learning environment in our own school. The classrooms will be completed late next year and we hope to start our first support class within our mainstream setting in 2022. During 2021, parents in local schools with students meeting the criteria to apply for this class will be contacted. If you would like to discuss this support provision, please call me at school on 6584 8060.

Year 6 Farewell and Presentation Day 2020

We are awaiting updates for these two events and hope to communicate plans to parents early next term. Of course, plans already being worked on by staff may change to meet restriction requirements if and when necessary.

LCPS P & C Update

Hello to all our LCPS families,

A little update for Term 3 we had our Father's Day stall, which was another success, thank you to all that bought gifts and supported us. Still some strange times with COVID, but we have been lucky to still have our meetings which are run on zoom and are working well. Link to 28 July meeting minutes. <https://bit.ly/33uYCMJ>

On Tuesday our executive team were given a treat to have a walk-through our new school buildings. Claire Briggs, Linda Barnett and I were amazed at the new build and it looks exceptional, so much space, inside and out. So well thought out from the kindergarten area, making it a gentle transition from preschool with a great outdoor play area, through to Stage 1 with 4 large classrooms interconnecting but yet their own space. Stage 2 and 3, this large 2 storey building is a new way of learning and great opportunities to help our children grow before high school. We were very impressed overall.

I think the students will be able to grow and learn with every aspect of life and showing awareness and knowledge of various design elements eg. From the collection of rain, into the water tanks and used in bathrooms (all the tanks have been colour coded to show the children where the water is used) to the solar, teaching children what the solar does and how it is used to power the school.

Thank you to Jock and Lisa Warwick for taking us through. We hope all families have a safe and happy holiday and look forward to seeing you all in Term 4.

Kind Regards,
Rebecca Bouldin
President

FUTURE THINK 2050 Leader's Conference

On Monday, 14 September, the LCPS leadership team were transported to 2050! Well, not really. They imagined what 2050 would look like for Port Macquarie on a zoom call with the schools from the Hastings Valley Community of Schools.

Some of the activities included:

1. Creating a living postcard where we acted like we were on solar powered hoverboards.
2. Inventing a 2050 trend like the bottle flip back in 2015. We made a unique LCPS war cry.
3. Designing something our community will need in 2050. We decided our local area definitely needs a theme park including a water park, trampoline park like flip out, ice cream machines and a food simulator.

It was an honour to represent not only our school but also be the voice for young people in our community.



Integrity and Respect

1. I can be kind and caring.
2. I can be honest and reliable.
3. I can be responsible and organised.



NCSS Newbies Challenge

Some Stage 3 students participated in the 2020 NCSS Newbies Challenge, which is a coding competition run by the Australian Computing Academy at the University of Sydney. Each week for 5 weeks, students received resources and questions and then submitted their answers to the Challenge website. Congratulations to Lexi, Ben and Summer who achieved a perfect score in the Challenge, while Taj, Sam, Brenton and Joel received High Distinctions.



HASTINGS
SECONDARY COLLEGE

EXCELLENCE - INNOVATION - OPPORTUNITY - SUCCESS

A reminder to Year 6 to apply for academies and select their PIP classes for Year 7 2021. Due to multiple requests for assistance and extensions of time we are accepting applications until **Friday 18th September**. Instructions and links on the website at:

<https://bit.ly/325pwLs>

If you need assistance, please contact the College HT, Michelle Garven.

Year 6: a friendly reminder to apply for
Academies
and select P.I.P. classes.

GATE CLOSURE REMINDER

Please remember that gates will be closed to all motor vehicles during the following times

Recess (10.45am - 11.15am)
Lunch (1pm-1.45pm)

If you are coming to school during these times you can park to the right of the gates and walk in.



Bus Pass Applications

Applications for 2020 School Student Transport Scheme (SSTS) travel entitlements are now open. If your application is rejected due to living within the walking distance radius, please contact the school office on 6584 8060 for assistance.

<https://apps.transport.nsw.gov.au/ssts/applyNow>

Year 3 Check-in Assessment

Dear Parents and Carers,

Year 3 students will participate in a new reading and numeracy check-in assessment in Term 4, 2020.

The Check-in assessment is a NSW Department of Education online reading and numeracy assessment available to support schools to assess and monitor Year 3 student learning following the period of learning from home.

The Check-in assessments can supplement existing school practices to identify how students are performing in literacy and numeracy and to help teachers tailor their teaching more specifically to student needs.

- The assessment is scheduled for Year 3 on Monday 19 October 2020 Week 2 Term 4 during the morning session between 8.45am-10.45am. This will take place in the library.

Year 3 teachers will supervise and support students during this time.

Mrs Bailey will coordinate the assessment.

Students with disability may receive the same level of support during the assessment that they would normally receive in the classroom.

Students are asked to bring headphones or earbuds that plug into a computer to enable them to hear audio during the assessment. Earbuds used for mobile phones or other portable devices may be suitable for use during the assessment. The type of computer connection needed is a jack or USB.

If your child needs earbuds provided by the school, please contact Mrs Bailey.

If you have any questions, please contact me at the school.

Kind regards

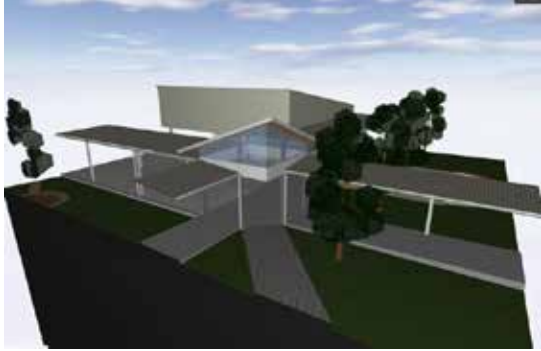
Mrs Bailey

Assistant Principal

15 September 2020

Create a Feature for Our New School

An exciting opportunity has been created for Lake Cathie Public School students to design a feature that will be installed in our new school. Interested students can create a sculpture or object that will sit atop of the new main walkway. The object might be a weathervane to show the direction of the wind or it could be a decorative sculpture.



Students will be provided with the design template and are asked to send all entries to the office before 30 October 2020. Extra copies of the template can be located in the school office.

This is a really exciting way students can become involved in our new school buildings and contribute something that will become a feature of the school for years to come. All designs will be judged before a final product is decided. The included image is our architect's screenshot of the walkway tower that the feature will be installed on. This image is just to give students an idea about what kind of structure the object will be installed on.

We are looking for students to create a design that reflects Lake Cathie Public School. Some ideas students might consider could be the colours of our school, local landmarks, animals or plants. The feature might be designed to have moving parts, such as a weathervane that moves with the wind. Some examples of weathervanes and sculptures are pictured on the poster to inspire students.

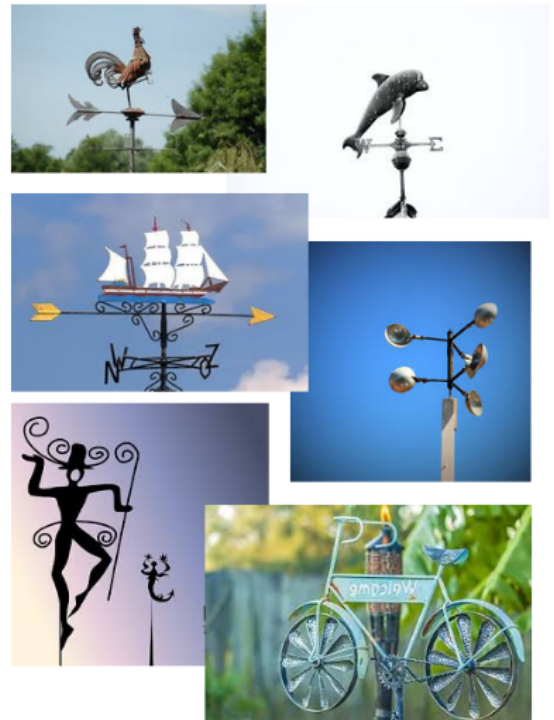
All students are encouraged to use their Mindset for Learning by taking on this challenge with confidence and contributing something special to our school. Any questions about the design competition can be directed to Mrs Haleblan or the school office.



Create a feature for our new school

CREATE A DESIGN FOR A FEATURE THAT WILL SIT ATOP THE WALKWAY IN OUR NEW SCHOOL. YOUR DESIGN SHOULD REFLECT OUR SCHOOL IN SOME WAY. IT MIGHT BE A WEATHERVANE TO SHOW THE WIND DIRECTION OR IT MIGHT BE SOMETHING DECORATIVE.

ALL DESIGNS WILL BE CONSIDERED AND JUDGED. THE FINAL VERSION WILL BE MANUFACTURED AND INSTALLED ON THE ROOF OF THE STRUCTURE SHOWN BELOW.



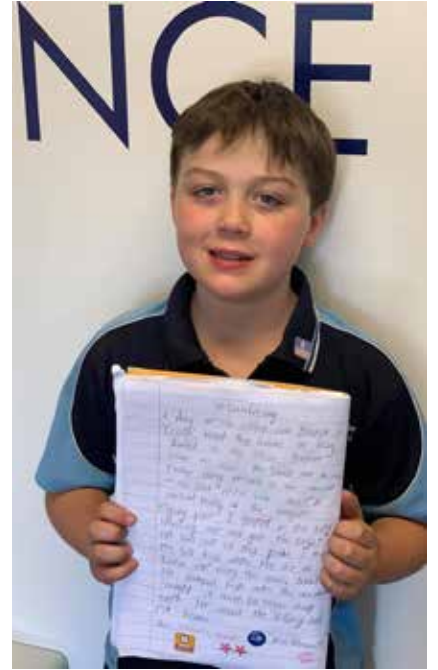
Designs to be returned by Friday 30 October 2020 to the school office.

Name: _____

Class: _____

Lake Cathie Public School Walkway Feature Design Competition

LEARNING @ LCPS



ASSEMBLY AWARDS

Assembly Awards Week 8				
Roll Class	Class Award	Sports Award	Student of the Week	Work of the Week
1F	Jayda Portelli	Charlie Grierson		Heidi Grein
	Sutton Ellul			
	Maddie Crouch			
1W	Elirah Randall-Kojta	Isla Bulmer		Ashlee Havron
	Kalani Jones			
	Will Sawtell			
2HB	Jensen Fenney			Robbie Lucas
	Lucca Donolato			
	Mason Hunter			
2HC	Karson McKinnon	Elka Williamson		Elodie Briggs
	Indii Rogerson			
	Zahli Moran			
2_3K	Sunny Butler			
	Tom Spencer			
3_4A	Charlotte Drury			Jasmine Bi
	Kye Randall			
	Hamilton			
4H	Jorjah Warwick			Nate Downing
	Sophie Wheatley			
	Tora Smith			
KG	Nicholas Cabban-Dhu	Lynk Brown	Oliver Cameron	Thomas O'Callaghan
KH	Evie Smith	Daniel Spencer	Tyr Pearse	Ben Munday-Ritchie
	Archibald Anderson			



ASSEMBLY AWARDS

Formal Assembly Awards Week 9		
Roll Class	Merit	Spirit
1F	Cruz Taylor	Eliza Smith
	Scarlett Collett	
	Sutton Ellul	
1W	Savannah McCormick	
	Jordan Noble	Nixon Walton
	Fallon Gilford	
2HB	Abigail Richters	
	Josie Lawton	
	Brianna Thompson	
2_3K	Isaac Latham	
	Makayla Murray	
	Duke Brown	
3P	Chloe Higgins	
	Ellie Bugledich	
	Bronte Cross	
3_4A	Leo Ellis	
	Tilly McDonald	
	Ella Collins	
	Harlow Eggins	
	Angus Castle	
	Cameron O'Callaghan	
	Talia Kapila	
	Kai Richards	
	Willow Anderson	

4H	James Hunt	
	Lily Havron	
	Ava Miller	
5M	Ashton Gillespie	
	Jake Savage	
	Nate Stricker	
	Taj Mervyn-Jones	
	Benjamin Reichelt	
	Jazmin Ray	
	Rylan Rogerson	
	Nate Stricker	
	Aiden Scarff	
	Benjamin Reichelt	
	Rylan Rogerson	
	Taj Mervyn-Jones	
KG	Aiden Scarff	
	Jazmin Ray	
	Bonnie Havron	Zahlee Rogerson
	Oliver Cameron	
	Tyler Demarkis	
	Jaxon Mewett	Tyler Lucas
KH	Beau Hall	
	Indie Saville	
	Emerson Warwick	



CANTEEN

Canteen Operation

From next term the canteen will again be operating three days a week, Monday, Thursday and Friday. A new menu for Term 4 will be available. Lunch orders will continue to be online only through My School Connect but recess and frozen treats will be able to be purchased over the counter or online. Online orders need to be placed before 9.00am on the day of the order.

Volunteers

A volunteer roster for next term will be posted to the Canteen Facebook page during the school holidays. If you are able to help out on any of the days please comment on the post or contact Kylie.

Canteen Roster	
Thursday 24 September	Mary ann Grant
Friday 25 September	Anthony Hodges
	Jenny Downing



OUR SCHOOL TUCKSHOP IS NOW ONLINE!

Download the free app or access www.myschoolconnect.com.au/lakecathieps

Birthday Bucket Ice Blocks



Share a cool Birthday treat with your classmates.

Birthday Buckets can be ordered online and delivered to your child's class. Each bucket is filled with enough Quelch ice blocks for the whole class. \$15.00 per bucket and the birthday child keeps the balloon to take home.

Order online at www.myschoolconnect.com.au

Birthday Buckets can be ordered Monday to Friday from Term 4.

OUR SCHOOL TUCKSHOP IS NOW ONLINE!

Download the free app or access www.myschoolconnect.com.au

- ### 1. REGISTER YOUR ACCOUNT

Register on any device, simply login to www.myschoolconnect.com.au and click on "Create Account", follow the prompts to add your email and password.
- ### 2. ADD YOUR STUDENT

And make sure that you select your school and classroom details.
- ### 3. SELECT "TOP UP"

To add money to your account via Credit Card or Paypal, you can choose Direct Deposit but allow 3-5 working days to process prior to ordering. You can also pay as you go, simply skip the pop up screen for adding funds and start ordering.

(Please note Merchant Fees applies to Credit Card or Paypal Transactions)

- ### 4. ORDER

To start ordering lunches simply select your Student and click "Buy Now", and you can order for the day, week. It's that simple!
- ### 5. CHECKOUT

Once you have completed your order, view your order summary in the "cart" and proceed to "checkout". Select your preferred form of payment and submit, all orders are confirmed via email.
- ### NOTE ON PAID ORDERS

Note that only paid orders will be sent to your canteen, not those still sitting in your cart. To start ordering lunches simply select your Student and click "Buy Now", and you can order for the day, week. It's that simple!

www.myschoolconnect.com.au

My School Connect has a 7 day a week Support Line, contact 1300 030 915



Our School Canteen has been recognised as a GREAT Healthy School Canteen.
Colour coding - **E** for **Everyday** and **O** for **Occasional** foods.

Sandwiches & Wraps – Lunch time only

All sandwiches are made on white bread unless stated. Wholemeal also available.

Wraps add 60c to Sandwich Price
GF bread available for an extra 60c

E	Vegemite Sandwich	\$2.00
E	Jam Sandwich	\$2.00
E	Honey Sandwich	\$2.50
E	Egg, mayo & lettuce Sandwich	\$2.50
E	Ham & Salad Sandwich (lettuce, tomato, cucumber, carrot, cheese)	\$4.50
E	Roast Chicken & Salad Tub - Lettuce, tomato, carrot, cucumber, cheese, egg & mayo	\$6.00 \$5.00
E	Ham & Salad Tub - Lettuce, tomato, cucumber, cheese, egg	\$5.50 \$4.50
O	Chicken Schnitzel, mayo & lettuce Wrap	\$4.60
	Extras: tomato, cucumber, cheese, carrot	50c each

Canteen Menu

Hot Foods – Lunch time only

O	Chicken Nuggets	70c each or 6 for \$4.00
O	Party pie	\$1.10
O	Noodle Cup - Chicken	\$2.50
O	Sausage Roll - homemade	\$3.00
E	Pizza – Ham & Pineapple	\$3.50
E	Spaghetti Bolognese	\$4.50
E	Mac Cheese	\$4.50
E	Beef Lasagne	\$4.50
E	GF Mac Cheese	\$4.50
E	GF Beef Lasagne	\$4.50
E	Toasted Cheese Sandwich	\$2.50
E	Toasted Ham & Cheese Sandwich	\$4.00
E	Toasted Ham, Cheese & Tomato Sandwich	\$4.50
E	Toasted Roast Chicken Sandwich	\$4.00
	Tomato Sauce	30c
	BBQ Sauce	30c

Snacks & Treats

O	Muffin	50c
O	Hash Browns	\$1.00
O	Grainwaves – Sour Cream & Chives	\$1.30
E	Popcorn	50c
E	Pizza – ½ English Muffin (pizza sauce and Cheese) – available Recess only	\$1.00
E	Fruit cup	50c
E	Fruit Piece	50c
E	Custard Cup - GF	\$1.00

The Schools newsletter and Canteen Facebook page will keep you informed when we are having our **MEAL DEALS** during the term.

To join our Facebook page search **LCPS Canteen** and click **Join** and we can add you to the group.

Term 4 - 2020

OPEN: Monday, Thursday & Friday

Frozen Treats – Lunch time only

O	Twisted Frozen Yoghurt: – Mango/Watermelon Vanilla/Strawberry Vanilla/Chocolate	\$2.00
O	Bulla Ice cream Cup Lite - GF	\$1.20
O	Lemonade Icy Twist	\$1.00
E	Frozen pineapple ring	50c
E	Frozen Custard on a stick	50c
E	Quech Fruit stick Black Currant, Apple, Strawberry, Raspberry, Mango, Orange, Tropical	50c

Drinks

E	Popper – 99% Juice Orange 250ml	\$1.50
E	Popper – 99% Juice – Apple 250ml	\$1.50
E	Popper – 99% Juice – Apple & Blackcurrant 250ml	\$1.50
E	Plain Milk 300ml	\$1.70
E	Bottle of water 600 ml	\$2.00
E	Oak Chocolate Lite Milk 300ml	\$2.20
E	Oak Strawberry Lite Milk 300ml	\$2.20

NOODLE CUPS / ICE BLOCKS / CUSTARD & FRUIT CUPS are to be collected from the canteen.

Preferred ordering for recess/lunch is through www.myschoolconnect.com.au

Otherwise, please write Clearly on a brown paper bag:

- CHILDS NAME
- CLASS
- ORDER

If you require a paper bag, please add 20c.



Fact sheet

FACEBOOK (For parents)

Follow us:



@ThinkUKnow_Aus



facebook.com/ThinkUKnowAustralia



What is Facebook?

Facebook is a free social networking site that allows users to create profiles, upload, share and view photos and videos and send messages. The site allows users who have common interests to interact, create and manage events and live chat with their online contacts, or 'Friends'. Facebook is restricted to users aged 13-years-old and above, however some users may lie about their age to join.

What devices can access Facebook?

Facebook can be accessed on any device that has an internet connection such as mobile phones, tablets and computers. It can be accessed via the Facebook website or through one of two apps, the generic Facebook app which includes all of Facebook's features except private messaging, and Facebook's 'Messenger' app which is used for private messaging.

Who can young people interact with when on Facebook?

Facebook users have the ability to interact with a wide range of individuals. Through Facebook's news feed users have the ability to interact in public conversations, with people who are not Friends.

What are the potential challenges with Facebook?

As with any form of social media, there are some challenges that young people may face when using Facebook. These can include online grooming (when an adult makes online contact with someone under the age of 16 with the intention of engaging in a sexual relationship) or cyberbullying and harassment. Other challenges include privacy concerns, such as revealing too much personal information on Facebook, reputation management or falling victim to scams shared through social networking sites.

What are the recommended privacy settings?

By maintaining strong privacy settings, users can limit the amount of information shared with strangers. When setting up privacy features on Facebook there are three options:

- **Public** - any Facebook user can view personal content and interact with your child.
- **Friends of Friends** - allows Friends and their Friends to view and interact with your child and their content.

- **Friends** - only accepted Friends can see your content in the first instance. The Friends option is the safest way to ensure that you are sharing information with people you know and trust, but should not be considered as 100 per cent private.

There is also the ability to change the privacy options for individual posts.

How do you manage Facebook privacy settings?

It may be easier to change privacy settings on a computer rather than a mobile device. To manage your privacy on Facebook (on a computer), access the privacy settings by clicking on the downward facing arrow in the upper right-hand side of the page and select 'Settings'. In the left hand column, click on 'Privacy'.

To access these settings on a mobile device select the 'More' tab. Scroll down to the **Help & Settings** section and select 'Account Settings' and then 'Privacy'.



Here you can change a number of settings:

Restricting who can see a timeline (wall)

Under the 'Who can see my stuff?' section, you can manage who is able to access your timeline. Next to 'Who can see your future posts?', click on 'Edit' to ensure that 'Friends' is selected.

Restricting who can contact me

Under the 'Who can contact me?' section, you can manage who is able to send you Facebook requests. Next to 'Who can send you friend requests?', click on the 'Who can send you friend requests?' and select the appropriate setting.





Fact sheet

FACEBOOK (For parents)

Follow us:



@ThinkUKnow_Aus



facebook.com/ThinkUKnowAustralia

Restricting who can see your email address and mobile number

Under the 'Who can look me up' section, you can manage who can see your email address and phone number if you have provided one.

Next to 'Who can look you up using the email address you've provided?', click on 'Edit' and select either 'Friends' or 'Friends of Friends'. Click on 'Edit' next to 'Who can look you up using the phone number you provided?' and select either 'Friends' or 'Friends of Friends'.

Restricting a Facebook profile being searchable

Under to 'Who can look me up' section, you can manage if your Facebook page will show up in search engine searches such as Google. The 'Do you want other search engines to link to you timeline?' option should be set to 'no' and can be switched to 'yes' by sharing your timeline with everyone.

How do you block offensive users?

You can block offensive users on Facebook by selecting the 'Block' option on their timeline, or by accessing the [Blocking](#) page through Facebook's [Account Settings](#).

To block a user, access their profile and select the 'More' option (signified by three dots) next to the 'Message' option on or under the person's cover photo. In the menu which appears, select the 'Block' option.

A dialog box will appear which provides options for dealing with the offensive user. This box will have different options depending on whether this person is already your friend. Select the 'Block' option to block the user.

Blocking a user will stop them from seeing your posts, tagging you, inviting you to events or groups, messaging you and adding you as a friend. If you are already friends, blocking a user will also unfriend him/her.

If you wish to report inappropriate content to Facebook you will need to do this before you block the user.

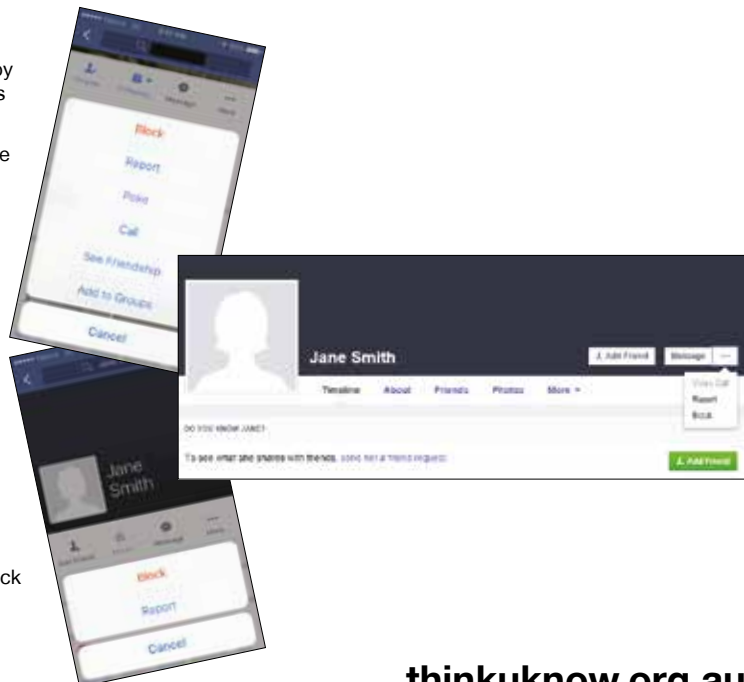
How do you report users or fake profiles?

To report a user or a fake profile on Facebook, access the profile's timeline and select the 'More' option (signified by three dots) next to the 'Message' option on or under the person's cover photo. In the menu which appears, select the 'Report' option.

In the corresponding dialog box, select 'Report this account' and then select the reason you wish to report the account. Follow the prompts to finalise your report.

More information

For more information, visit www.facebook.com/help



thinkuknow.org.au





Fact sheet

YouTube (For parents)

Follow us:



@ThinkUKnow_Aus



facebook.com/ThinkUKnowAustralia

What is YouTube?

YouTube is a free, user-generated video sharing website that allows users to watch, create and upload their own videos to share with others. YouTube has over a billion users. Anyone is able access the videos on the service online however users must create an account to upload and share their own content. The site is moderated by users who can flag inappropriate content. YouTube reviews the content and if it violates their community guidelines the content is removed, or age restrictions are put in place.

How are young people using YouTube?

Young people use YouTube to watch, create and upload videos. It is used to socialise, interact, learn, share and watch content. Popular types of videos include music, pranks, parodies, and 'how to videos'. YouTube is the second largest search engine in the world and can be used as the starting point for research or learning about a particular topic.

What are the age restrictions for YouTube?

Users are required to be 13-years-old to use the site. Users under 13-years-old are recommended to use YouTube Kids. Age restrictions are difficult for YouTube to monitor as age is only verified when users create an account, however it is not necessary to have an account to use the service. YouTube restricts videos it has deemed inappropriate for people under 18-years-old by requiring users to sign in to an age verified account before they are able to access restricted content.

Is it free?

It is free to view and upload videos on YouTube but there is a paid version of the service, known as YouTube Red. YouTube Red gives subscribers access to ad free viewing as well as enabling them to watch television shows and movies. This service is available in America and will soon be expanded to other countries. You must be 18 years or older to use this service and you also need a Google account with a valid payment method.

What does subscribing to someone's YouTube channel mean?

Subscribing to a channel means that a user is interested in the videos that another user is posting and would like to be notified when new videos are uploaded to the channels they follow. This is very similar to 'friending' or 'following' on other types of social media. A channel can be run by an individual, organisation or business and can consist of any type of video content.

What is the difference between a YouTube account, username and channel?

When a YouTube account is created, users are able log into YouTube and get a username and a channel (a username is often the same as a channel name). A username is used to comment on videos and a channel is used to upload video content. There can be multiple channels under a single YouTube account.

What are some of the potential issues with YouTube?

YouTube consists of user-generated content. Videos found on the site don't always have age appropriate classifications. The site relies on users to monitor and report inappropriate content. Users do not need to create an account to use the site so it is difficult to manage or regulate underage users. YouTube users may be exposed to bullying and harassment on the site however there are steps people can take to minimise this risk.

What are the recommended settings on YouTube?

As YouTube users do not have to have a personally identifiable account to use the site, the privacy settings are somewhat limited.

Privacy settings can be created on user accounts and the videos that are uploaded. Videos have three setting options; public, private or unlisted. It is recommended that young people set their videos to private or unlisted.





Fact sheet

YouTube (For parents)

Follow us:



@ThinkUKnow_Aus



facebook.com/ThinkUKnowAustralia

What are the recommended settings on YouTube? (continued)

- **Public** - anyone is able to search and view your videos
- **Private** - only people you allow can search for and watch your videos
- **Unlisted** - only people that you send the link to can view your videos.

Commenting on videos is set as a default option, however this can be disabled.

How do I turn on restricted mode?

You can enable restricted mode to filter inappropriate content on the browser on your computer/device. YouTube uses age-restrictions, community flagging, and other indicators to recognise and filter inappropriate content. While it is not 100 per cent accurate, it can be useful as a parental control. We recommend that this is used in conjunction with conversations with your child about what is and isn't appropriate viewing.

To turn on restricted mode you must be logged into a YouTube account. Restricted mode can be locked and removed with a YouTube account username and password. Once enabled, restricted mode will remain on regardless of whether you are logged in or not, or if another person is logged into a different YouTube account.



How do I delete my child's YouTube channel?

After talking with your child about the responsible use of YouTube and your family's rules around technology, you may think it's appropriate to delete a YouTube channel. If an account is deleted, any content on that account will be deleted and unable to be recovered. Be aware that you cannot delete a channel on a mobile device.

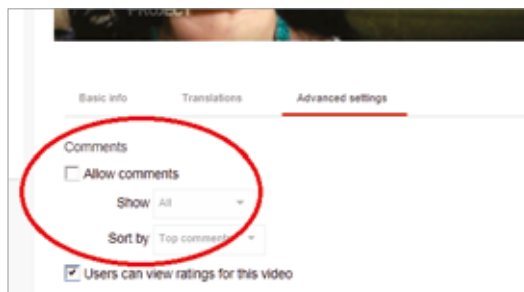
You can delete a channel by:

- Signing into the account you want to delete
- In the top right, click your account > **YouTube settings**
- Under '**Account settings**', select '**Overview**'
- Under the channel's name, select '**Advanced**'
- At the bottom, select '**Delete channel**'.

How do I deal with and report abuse or inappropriate content on YouTube?

Abusive or inappropriate content can be reported via the flagging or reporting tool on YouTube. If your child has received a serious violent threat, contact your local police.

It is recommended that comments are disabled on videos to avoid abuse and being exposed to inappropriate language or offensive content. Comments can be disabled by connecting to your YouTube account, selecting a video in 'Video Manager' and unchecking 'Allow comments' in the settings options.



Users can also be blocked, so they cannot see or leave comments on uploaded content.

For more information, visit

www.support.google.com/youtube

thinkuknow.org.au



COMMUNITY NOTICES



AGJ PLUMBING

Andrew Jones
 m 0422 953 624
 e info@agjplumbing.com.au

- Hot water systems
- Natural & LPG Gas
- Kitchen / Bathroom renovations
- General plumbing and drainage

ABN: 272 0159 2843
 Licence No: 239368c



Active OOSH

Leaders in Out of School Hours Care for over 10 years.

Providing quality and affordable Before School, After School and Vacation Care programs from as little as \$3.08 a session.

Get the most innovative, caring and fun out of school hours care for your family contact us today.

PH: 02 6554 8905 E: info@activeoosh.com.au W: www.activeoosh.com.au

salt
 COMMUNITY CHURCH

5pm Saturdays at LCPS


Creche for 0-5 year olds

Kids' program for children in years K-6

Supper and kids' dinner provided

Everyone welcome!

A PLACE WHERE Wonder IS UNCOVERED



Kim Woodhouse
 District Manager
 0427 645 145
camdenhavengirlguides@gmail.com

LEARN MORE HERE
aplacetogrow.org.au


GIRL GUIDES MEET NEAR YOU

Camden Haven **Junior Guide** Unit
 For girls 5-9 years old
Thursday 4-5.30pm

Camden Haven **Guide** Unit
 For girls 9-13 years old
Thursday 6-8.00pm

Camden Haven **Senior Guide** Unit
 For girls 13-18 years old
Thursday 4-6.00pm

@ Laurieton Sea Scout Hall
 Tunis St, Laurieton

Wauchope-Bonny Hills Surf Life Saving Club
 'Nippers'

'Nippers' is a great opportunity for your child/children to enjoy the beach but learn some vital 'Surf Awareness' skills at the same time.


Our first Club Day for the new season is on the **18th October 2020**.
 Starting at 8:45am at Rainbow Beach Bonny Hills

Every child needs to be **registered & must also have completed a Preliminary Pool Swim** before they can participate in any activities at Nippers. You can now register at: join@sls.nsw
<https://www.surflifesaving.com.au/so>

We are holding two Rego-Pool Swim Days - at the Port Macquarie Pool:
Sunday 13th September 10-12:30 & 11th October 10-12:30

For more information contact:
 Director of Youth - **Steve Robinson** 0432651278

We are Proudly Sponsored by:




JOIN THE FUN!

Swimming events for the whole family

LAURIETON SWIMMING CLUB

www.laurieton.swimming.org.au

Season starts: **Monday 12th October 2020, Marshalling at 5:45pm**

Registrations online: www.northcoastnsw.swimming.org.au
 Click on access Swim Central

Active Kids Rebate: use your Active kids Voucher in swim central to get **FREE MEMBERSHIP**, if applicable

COST: All swimmers \$100, Non-swimmers \$25
 At least one parent must join to supervise their children and volunteer

For more information on Laurieton Swimming Club, Like us on Facebook, email laurietonswimmingclub@gmail.com or contact Michelle Kirkwood on 0425226144

Covid-19 safety protocols in place.




For information on swimming lessons contact Laurieton Pool 65599072
 Squad training contact Ann Pitkie Pool 047646651